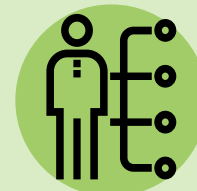


# Family and Community Services



Your plan, your way. Connect with professional, customized and easy to access support for your unique needs.



**Solutions Navigation** is free and supports you with achieving your goals and finding solutions to any of life's challenges.



**Counselling** will listen and support you to work through life's challenges. Counselling is pay what you can afford, between from \$0 to \$90.



**Family Resource Network** offers free programs that help you on your parenting journey and supports your children through all stages of their life.

Visit [strathcona.ca/fcs](http://strathcona.ca/fcs), call in to **780-464-4044** or walk in to:

Second floor, East Wing, Community Centre  
401 Festival Lane, Sherwood Park, AB T8A 5P7

